

## Infrared surface heating element for integration in the IR cabin

### Assembling of the heating element:

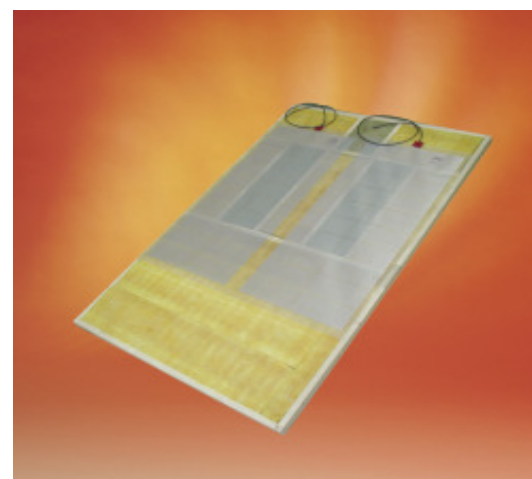
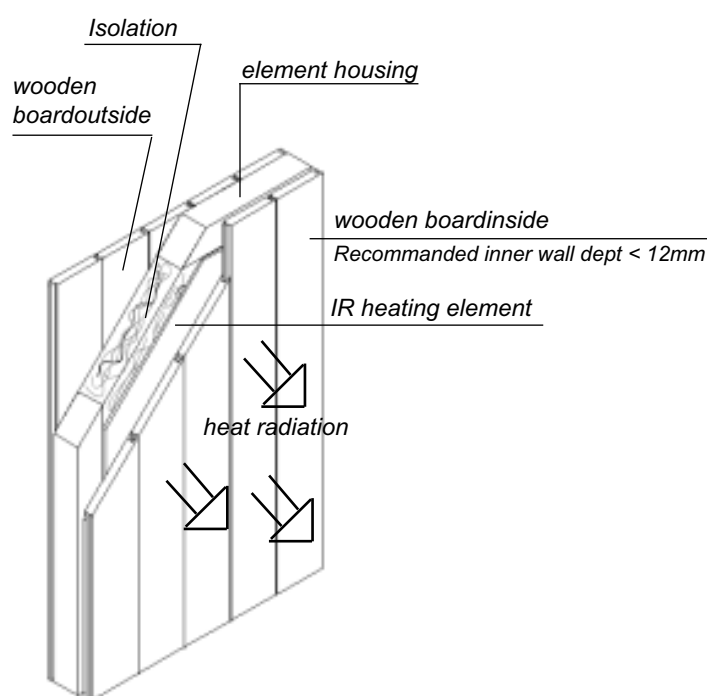
polyester foil with aluminium heating element, heavy metal free, safety temperature guard at the upper end of the foil in a silicone housing.

Switch off temperature = 120° C

Re heating temperature = 110° C

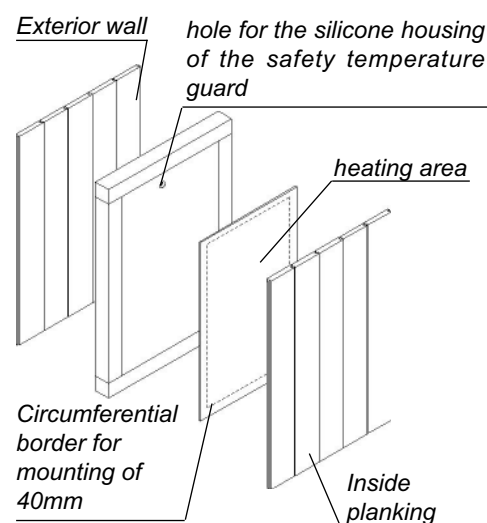
Circumferential border for mounting of 40mm.

### Functional Principle



MADE IN GERMANY

### Assembling scheme



| Art.-No. | Electr. connection / power    | Circumferential border for mounting | Dimensions of the foil in cm | Dimensions of heating area in [cm] | Spectrum       | For operation with control units |
|----------|-------------------------------|-------------------------------------|------------------------------|------------------------------------|----------------|----------------------------------|
| 94.3742  | 230 V N AC 50 Hz<br>ca. 650 W | 4 cm                                | 170 x 80                     | 162 x 72                           | > 6 µm<br>IR-C | EMOTEC HIC 75<br>60 IR           |
| 94.3743  | 230 V N AC 50 Hz<br>ca. 550 W |                                     | 145 x 80                     | 137 x 72                           |                |                                  |
| 94.3744  | 230 V N AC 50 Hz<br>ca. 450 W |                                     | 160 x 60                     | 152 x 52                           |                |                                  |
| 94.3745  | 230 V N AC 50 Hz<br>ca. 350 W |                                     | 125 x 60                     | 117 x 52                           |                |                                  |
| 94.3835  | 230 V N AC 50 Hz<br>ca. 275 W |                                     | 160 x 40                     | 152 x 32                           |                |                                  |
| 94.3891  | 230 V N AC 50 Hz<br>ca. 90 W  |                                     | 60 x 30                      | 52 x 22                            |                |                                  |

Subject to technical modifications